

Supporting Information for

Development of caged non-hydrolyzable phosphoamino acids and application to photo-control of binding affinity of phosphopeptide mimetic to phosphopeptide-recognizing protein

Koji Ebisuno, Masaya Denda, Keiji Ogura, Tsubasa Inokuma, Akira Shigenaga*, Akira Otaka*

Institute of Health Biosciences and Graduate School of Pharmaceutical Sciences, The University of Tokushima, Shomachi, Tokushima 770-8505, Japan.

E-mail:

shigenaga.akira@tokushima-u.ac.jp (A. Shigenaga)

aotaka@tokushima-u.ac.jp (A. Otaka)

Table of Contents

Figure S1.....	S2
Figure S2.....	S3

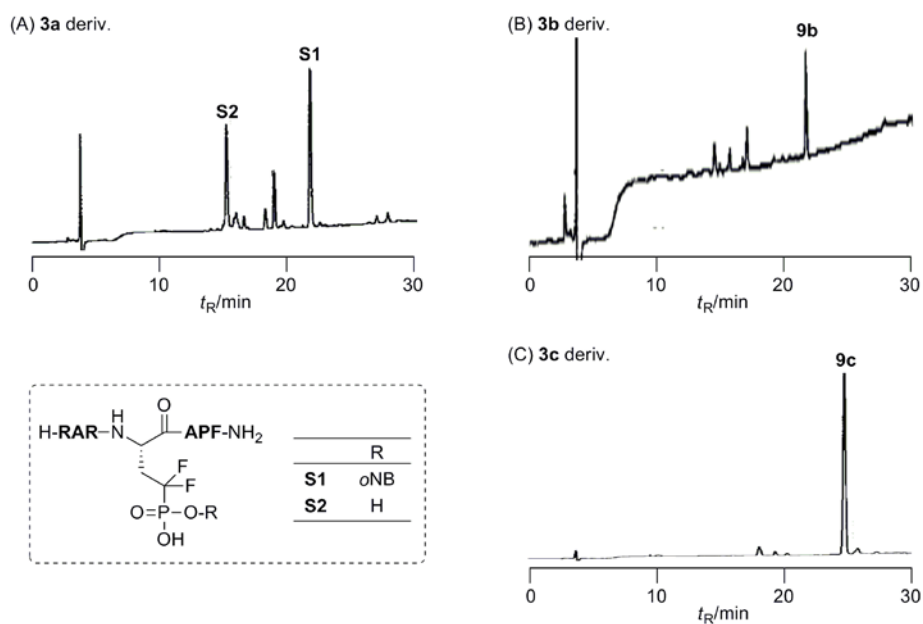
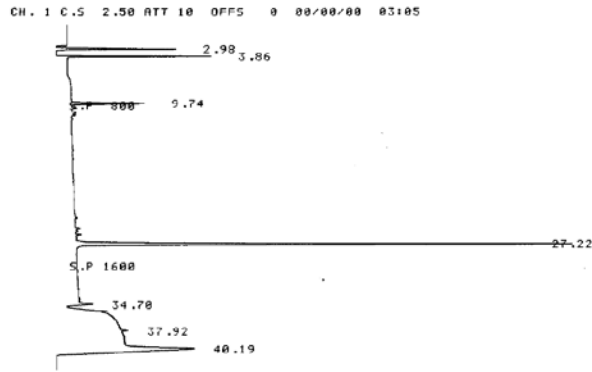


Figure S1. HPLC profiles of crude peptides containing **3a–c**. HPLC conditions: linear gradient of 0.1% (v/v) TFA/MeCN in 0.1% (v/v) TFA aq, 5–45% over 30 min. *o*NB-deletion was sometimes observed, and an amount of the *o*NB-deleted peptide was increased when an amino acid building blocks had not been preactivated before incorporation into a peptide by SPPS. **S1**: LRMS (ESI-TOF) m/z calcd for $[M + 2H]^{2+}$ 526.7, found; 526.8. **S2**: LRMS (ESI-TOF) m/z calcd for $[M + 2H]^{2+}$ 459.2, found; 459.3.

[Before UV-irradiation]



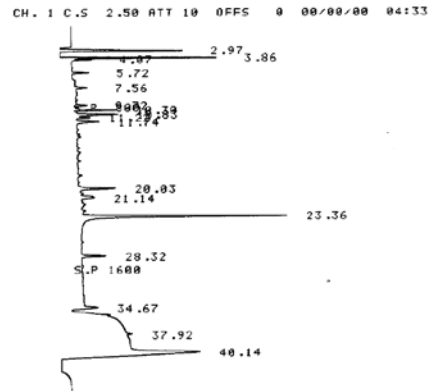
D-2500 00/00/00 03:05

METHOD: TAG: 3 CH: 1

FILE: 0 CALC-METHOD: AREA% TABLE: 0 CONC: AREA

NO.	RT	AREA	CONC	BC
1	2.98	2005770	4.923	BB
2	3.86	1843948	6.364	BB
3	9.74	1319159	4.553	BB
4	27.22	9200725	31.754	BB
5	34.78	728206	2.513	BB
6	37.92	5608891	19.358	BB
7	40.19	8267868	20.535	BB
TOTAL		28974567	100.000	
PEAK REJ :		0		

[After UV-irradiation]



D-2500 00/00/00 04:33

METHOD: TAG: 4 CH: 1

FILE: 0 CALC-METHOD: AREA% TABLE: 0 CONC: AREA

NO.	RT	AREA	CONC	BC
1	2.97	2892788	7.314	BB
2	3.86	1800189	6.292	BU
3	4.07	421776	1.474	UB
4	5.72	265790	0.929	BB
5	7.56	201232	0.703	BB
6	9.72	187514	0.655	BB
7	10.30	661897	2.313	BU
8	10.93	883544	3.095	UU
9	11.22	230215	0.833	UU
10	11.74	542260	1.895	UR
11	20.03	726276	2.530	BB
12	21.14	501009	1.751	BB
13	23.36	4918748	17.191	BB
14	28.32	455079	1.590	BB
15	34.67	733504	2.371	BB
16	37.92	5690169	19.007	BB
17	40.14	8200803	20.969	BB
TOTAL		20612073	100.000	
PEAK REJ :		0		

Figure S2. Peak areas of HPLC charts in Figure 2C. Reaction and HPLC conditions are shown in the footnote of Figure 2.