

REVIEW

The role of thymic epithelium in thymus development and age-related thymic involution

Sayumi Fujimori and Izumi Ohigashi

Division of Experimental Immunology, Institute of Advanced Medical Sciences, Tokushima University, Tokushima, Japan

Abstract : The establishment of an adaptive immune system is critical for protecting our bodies from neoplastic cancers and invading pathogens such as viruses and bacteria. As a primary lymphoid organ, the thymus generates lymphoid T cells that play a major role in the adaptive immune system. T cell generation in the thymus is controlled by interactions between thymocytes and other thymic cells, primarily thymic epithelial cells. Thus, the normal development and function of thymic epithelial cells are important for the generation of immunocompetent and self-tolerant T cells. On the other hand, the degeneration of the thymic epithelium due to thymic aging causes thymic involution, which is associated with the decline of adaptive immune function. Herein we summarize basic and current knowledge of the development and function of thymic epithelial cells and the mechanism of thymic involution. *J. Med. Invest.* 71:29-39, February, 2024

Keywords : *thymus, T cell, thymic epithelial cell, thymic involution*

INTRODUCTION

Adaptive immunity is a sophisticated defense system in the human body. Lymphoid T cells, one of the major cell populations in the adaptive immune system, are capable of discriminating between self and non-self antigens. T cells respond to invading pathogens with antigen specificities but tolerate components in the body. Immunocompetent and self-tolerant T cells are generated in the thymus. The thymus is composed of hematopoietic cells, such as T cells; thymic epithelial cells (TECs); and non-TEC stromal cells. These cells form a three-dimensional network by interacting with each other, constructing a thymic microenvironment consisting of the cortex and the medulla. The cortical microenvironment is the site for early T cell development and positive selection of functionally competent T cells, whereas the medullary microenvironment is the site for negative selection of self-reactive T cells and the development of regulatory T cells to establish self-tolerance. The functional characteristics of these two microenvironments are typified by the functions of cortical thymic epithelial cells (cTECs) and medullary thymic epithelial cells (mTECs), respectively (1). Abnormalities in the function and development of TECs lead to immune diseases such as immunodeficiencies and autoimmune diseases. Therefore, the functional competence of TECs for generating immunocompetent and self-tolerant T cells is important for the proper operation of the adaptive immune system.

T cell generation in the thymus decreases in an age-dependent manner. The thymus undergoes the earliest age-related chronic involution among the organs of the body (2). Thymic involution is also induced transiently by such factors as infection, chemotherapy, and stress (3). The reduction of T cell production due to age-related thymic involution is linked to the decline of adaptive immune function, which, in turn, may be associated

with a reduced response to vaccination and an increased tumor incidence in the elderly (4). It has been reported that thymic involution increases the generation of senescent T cells that may be associated with age-related diseases (5, 6). Accumulated evidence suggests that the age-related alteration of TEC properties is involved in thymic involution. In this regard, the regeneration of TECs to restore T cell production in the thymus is a promising treatment strategy.

Herein, we discuss the development and function of the thymus, focusing on the developmental and functional mechanisms of TECs. We also discuss the mechanisms of thymic involution, centering on the degeneration of TECs in the process of age-related thymic involution.

DEVELOPMENT OF THYMUS

Development of thymic epithelium

Thymus development is initiated in mid-gestation. In mice, TECs, marked by the expression of the transcription factor forkhead box protein N1 (Foxn1), develop in a part of the endoderm-derived epithelium of the third pharyngeal pouch around day 11 of gestation. Cells with characteristics of cTECs and mTECs are detectable around day 12 of gestation. The differentiation of cTECs and mTECs from a common thymic epithelial progenitor cell is regulated by Foxn1 (7-10). During embryonic thymus organogenesis, the majority of TECs express cTEC-associated molecules such as CD205 and the thymoproteasome component $\beta 5t$, suggesting that embryonic TECs expressing cTEC-associated molecules possess progenitor activity. Cell lineage analysis using re-aggregated thymic organ culture or fate mapping revealed that embryonic TECs expressing cTEC molecules contain progenitor cells capable of giving rise to mTECs (11, 12). Therefore, it is believed that cTECs and mTECs are derived from common progenitors that progress from a lineage-uncommitted progenitor stage to a transitional TEC progenitor stage that expresses cTEC-associated molecules.

How TECs are supplied to the adult thymus following organogenesis completion is controversial. Bipotent TEC progenitors in the adult thymus have been identified by two independent studies (13, 14). The bipotent progenitor activities of TECs isolat-

Received for publication November 16, 2023; accepted February 26, 2024.

Address correspondence and reprint requests to Izumi Ohigashi, Division of Experimental Immunology, Institute of Advanced Medical Sciences, Tokushima University, 3-18-15, Kuramoto-cho, Tokushima City, Tokushima, Japan and E-mail: ohigashi@genome.tokushima-u.ac.jp

ed from the adult thymus were demonstrated experimentally by re-aggregating these cells with embryonic thymic cells, although the progenitor activity of these cells in the physiological condition has not yet been identified. On the other hand, we have reported that mTECs in the postnatal thymus are maintained by mTEC lineage cells derived from progenitor cells that express $\beta 5t$ from the embryonic period to the neonatal period (15). Once the thymic medulla is fully formed, the contribution of $\beta 5t^+$ TEC precursors to the supply of mTECs is severely limited, if not eliminated (15, 16). Indeed, mTEC-specific embryonic stem cells that are capable of generating functional mTECs responsible for the establishment of self-tolerance in T cells have been identified and these stem cells are derived from $\beta 5t$ -expressing TEC progenitors (15, 17). Notably, although the development of cTECs and mTECs is severely impaired in the *Foxn1*-deficient thymus, mTEC stem cells are detected even in the absence of *Foxn1* expression, suggesting that mTEC stem cells emerge independently of *Foxn1* (18). In addition to mTEC-specific stem cells, mTEC progenitors have been identified by tracing the differentiation potential or performing the trajectory analysis of single cell-based transcriptome profiles. Several mTEC progenitors have been reported by different groups (Fig. 1) (19-25), including *Sox9*⁺ TECs, *RANK*⁺ TECs, keratin 19-expressing TECs, and *CCL21*⁺ TECs in the embryonic thymus (19, 20, 23, 24). The reported progenitors also include podoplanin⁺ TECs that localize to the cortico-medullary junction where TEC progenitors are suggested to be located, as well as transient amplifying cells termed TAC-TECs (22, 25). However, the relationships among these mTEC progenitor cells have remained unknown. Recent studies have reported that Notch signaling is required for the production and maintenance of mTEC-specific progenitor cells and almost all mTECs have a history of receiving Notch signals, suggesting the involvement of Notch signaling in mTEC fate determination (26, 27).

The molecular mechanisms that regulate mTEC development and medullary organization are known to involve tumor necrosis factor (TNF) superfamily cytokine signaling and NF κ B signaling (18, 28, 29). Epigenetic regulators, including histone deacetylase 3 (HDAC3) and polycomb repressive complex 2 (PRC2), are also involved in the regulation of mTEC development. HDAC3 controls mTEC development independently of NF κ B signaling and by repressing Notch signaling (30). Indeed, the forced expression of *Notch1* in TECs results in the blockage of mTEC development (26, 27). It has also been reported that mice with TEC-specific inhibition of PRC2 function have a hypoplastic thymus and show a marked decrease in the number of mature mTECs after birth (31). The transcriptional profile in TECs, including molecules related to protein processing and antigen presentation, is altered, and the diversity of T cell receptor (TCR) repertoire is reduced by the functional deficiency of PRC2, indicating that the differentiation and function of postnatal TECs are affected by the epigenetic regulation of gene expression (31).

In contrast to mTECs, little is known about the molecular mechanisms that regulate cTEC development, although it has long been understood that interactions with immature T cells are important for the differentiation and maintenance of cTECs (32). The Wnt/ β -catenin signaling pathway is known to be involved in early thymus development, as shown in mouse studies that manipulated core components, including the T cell factor (TCF)/lymphoid enhancing factor (LEF) family transcription factors, Wnt, or β -catenin, either systemically or specifically in keratin 5⁺ epithelial cells (33-37). However, the role of the TEC-specific Wnt/ β -catenin signaling pathway was not addressed in those studies owing to extrathymic abnormalities or insufficient gene manipulation. By using the Cre-mediated targeting to *Foxn1*- or $\beta 5t$ -expressing cells, we and others showed that the deletion of β -catenin, a major mediator of the Wnt/ β -catenin signaling

pathway, in TECs resulted in a decrease in the number of cTECs but not mTECs after the neonatal period, but did not affect the cortical and medullary thymic structures (38, 39). Furthermore, the increase in β -catenin function specifically in TECs leads to the impaired differentiation of cTECs and mTECs (38-40). These results suggest that Wnt/ β -catenin signaling is not essential for cTEC and mTEC differentiation, although the signal intensity defines the characteristics of TECs and the number of cTECs.

ROLE OF THYMIC EPITHELIUM IN T CELL GENERATION

Role of cortical thymic epithelium

Bone marrow-derived T-lymphoid progenitor cells enter the thymus through the blood vessels at the cortico-medullary junction and move to the cortex. Chemokines, including CXCR4 ligand CXCL12 and CCR9 ligand CCL25 produced by cTECs and CCR7 ligands CCL19 and CCL21 produced by mTECs, contribute to the thymic entry of T progenitor cells (41-43). cTECs also express Notch ligand delta-like 4 and cytokine IL-7, which are important for the lineage specification and development of T cells (44, 45). In addition to the regulation of T cell development, cTECs play a crucial role in the positive selection of newly generated T cells. cTECs have unique machinery that produces positive selection-inducing self-peptides by expressing enzymes, including thymus-specific serine protease (TSSP), cathepsin L (CTSL), and thymoproteasomes. TSSP and CTSL are involved in the generation of MHC class II-associated self-peptides for inducing the positive selection of CD4-lineage cells, whereas thymoproteasomes generate MHC class I-associated self-peptides for inducing the positive selection of CD8-lineage cells (46-49). TSSP and CTSL are expressed in other cells including dendritic cells (DCs). In contrast, thymoproteasomes are expressed only in cTECs because $\beta 5t$, a component unique to thymoproteasomes, is specifically expressed in cTECs (48, 50). The transcription of $\beta 5t$ -encoding *Psmb11* is directly regulated by *Foxn1* (51). However, *Foxn1* is expressed in cTECs, mTECs, and skin keratinocytes. Therefore, other mechanisms, in addition to *Foxn1*, may contribute to the regulation of the cTEC-specific transcription of *Psmb11*. The cTEC-specific expression of thymoproteasomes is important for the generation of self-peptides that are optimal for the positive selection of CD8-lineage cells. It has been theorized that differential self-peptide display between the cortex and the medulla optimizes T cell generation, allowing positively selected T cells to escape from negative selection (52). In contrast to thymoproteasomes in the cortex, MHC class I-associated peptides are generated by immunoproteasomes or proteasomes in antigen-presenting cells in the thymic medulla. Furthermore, two independent studies have reported that the negative selection of CD8-lineage thymocytes is enhanced without affecting the positive selection when both positive and negative selection-inducing peptides are generated by the same proteasomes (53, 54). On the other hand, we have reported that the generation of CD8T cells is impaired in thymoproteasome-deficient mice, even in the absence of the thymic medulla or medullary antigen-presenting cells, including mTECs, DCs, and B cells (55). We have also reported that thymoproteasome deficiency reduces positively selected CD8-lineage thymocytes even when thymocyte apoptosis by negative selection is inhibited by the transgenic expression of the anti-apoptotic molecule Bcl-2 (55). Therefore, thymoproteasomes regulate the positive selection of CD8T cells independent of the thymic medulla, medullary antigen-presenting cells, and thymocyte negative selection. A comparative analysis of MHC class I-associated peptides displayed by mouse embryonic fibroblasts ectopically expressing thymoproteasomes

or immunoproteasomes has revealed that thymoproteasomes generate self-peptides with optimal binding affinity to TCRs to induce positive selection (49). However, thymoproteasome-dependent self-peptides displayed by cTECs have not yet been identified. The identification of those self-peptides would enhance our understanding of the mechanism of thymoproteasome-dependent positive selection.

It is also interesting to note that cTECs envelop developing thymocytes and such cTECs are known as thymic nurse cells (56). Each thymic nurse cell engulfs approximately 100 to 150 thymocytes and provides a microenvironment that optimizes T cell selection (56, 57).

Role of medullary thymic epithelium

Positively selected T cells in the cortex migrate to the thymic medulla to undergo further selection. To establish self-tolerance in the medulla, T cells expressing TCRs that bind with high affinity to self-peptide-MHC complexes are eliminated by negative selection or differentiate into regulatory T cells that suppress the immune response. Positively selected T cells increase the expression of CCR7, a chemokine receptor (58). On the other hand,

mTECs express CCR7 ligands CCL19 and CCL21. There are two types of CCL21 proteins in mice, CCL21Ser and CCL21Leu, which contain serine and leucine at the 65th amino acid, respectively (59). CCL21Ser is encoded by *Ccl21a*, whereas CCL21Leu is encoded by several genes including *Ccl21b* and *Ccl21d*. Among these CCR7 ligands, CCL21Ser plays an essential role in the thymus; in its absence, the migration of T cells from the cortex to the medulla is impaired (60). As a consequence, the negative selection of self-reactive T cells in the thymic medulla is impaired, and autoimmune disease develops in mice as a result of CCL21Ser deficiency, even though the expression of other CCR7 ligands is intact (60). On the other hand, the impairment of T cell migration into the medulla and the development of autoimmune diseases are undetectable in mice deficient in CCL19 (60). Therefore, CCL21Ser has a nonredundant role in the establishment of self-tolerance in T cells in the thymic medulla.

mTECs are unique in terms of the ectopic expression of tissue-specific antigens (TSAs) to establish self-tolerance in T cells. The expression of TSAs is regulated by Aire, which is responsible for the autoimmune polyendocrinopathy-candidiasis-ectodermal syndrome (61-63). Although not a conventional transcription

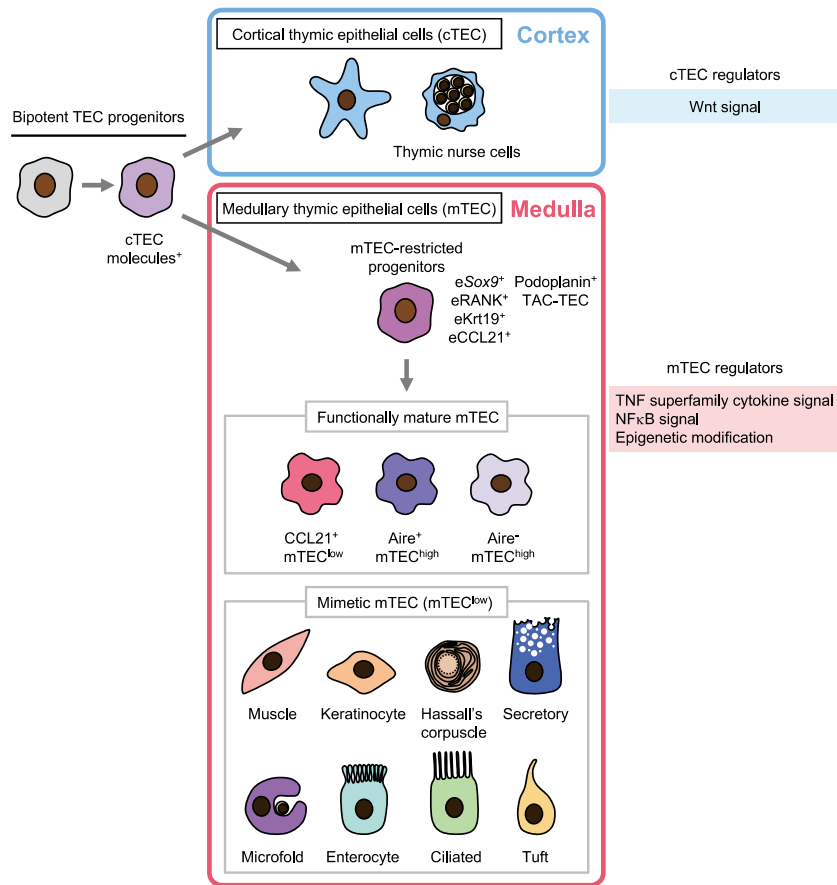


Figure 1. Thymic epithelial cell heterogeneity.

cTECs and mTECs differentiate from common thymic epithelial cell (TEC) progenitors through intermediate progenitor cells expressing cTEC-associated molecules. mTECs are divided into two populations, mTEC^{low} and mTEC^{high}, which are CD80^{low}MHC class II^{low} and CD80^{high}MHC class II^{high}, respectively. The mTEC^{high} subset contains Aire-expressing mTECs. The mTEC^{low} subset contains progenitors that give rise to the mTEC^{high} subpopulation. Several mTEC-restricted progenitors have been identified, including *Sox9*⁺ embryonic TECs (*eSox9*⁺), *RANK*⁺ embryonic TECs (*eRANK*⁺), keratin19⁺ embryonic TECs (*eKrt19*⁺), and CCL21⁺ embryonic TECs (*eCCL21*⁺). mTEC progenitors also include podoplanin⁺ TECs and TAC-TECs. Functionally mature CCL21⁺ mTECs, as well as post-Aire mTECs differentiated from the mTEC^{high} subpopulation, also belong to the mTEC^{low} subset. Recent single cell-based comprehensive analysis of TECs has revealed heterogeneous TEC subpopulations including post-Aire mimetic mTECs, which transcriptionally mirror extrathymic cells. The mimetic TECs are named according to their counterparts (muscle, keratinocyte, Hassall's corpuscle, secretory/neuroendocrine, microfold, enterocyte/hepatocyte, ciliated, and tuft mTECs).

factor, Aire accounts for the expression of thousands of genes in mTECs. Furthermore, it has been reported that the transcription factor *Fezf2* regulates the expression of Aire-independent TSAs (64). On the other hand, it has also been reported that *Fezf2* deficiency has little impact on the expression of Aire-independent TSAs, but affects late-mTEC development (65, 66). The significance of *Fezf2* function in the establishment of self-tolerance is still controversial. mTECs are roughly divided into two populations, mTEC^{low} and mTEC^{high}, which are CD80^{low}MHC class II^{low} and CD80^{high}MHC class II^{high}, respectively (Fig 1). The mTEC^{high} subset contains Aire-expressing mTECs and is essential for the presentation of self-antigens to developing thymocytes. On the other hand, the mTEC^{low} subset contains progenitor/immature mTECs that are capable of giving rise to mTEC^{high}, as well as mTECs that are further differentiated from mTEC^{high}, termed post-Aire mTECs (19, 67). mTEC heterogeneity was clarified on the basis of morphological differences, such as Hassall's corpuscles, ciliated columnar epithelial cells, and neurosecretory epithelial cells (68). Recent comprehensive analyses of TECs at single cell-level have revealed that mTECs are a more heterogeneous population than previously recognized (21, 69-71). Regarding post-Aire mTECs, single-cell assays for chromatin accessibility have revealed several distinct clusters, each of which is characterized by lineage-defining transcription factors for skin, lung, liver, and intestinal cells (71). Furthermore, these lineage-defining transcription factors detected in each mTEC cluster are associated with chromatin accessibility patterns that correspond to each cell type, including keratinocytes, microfold cells, endocrine cells, and tuft cells (69, 71, 72). These post-Aire mTECs transcriptomically mirror the extra-thymic cells but retain the mTEC signature and are therefore termed mimetic mTECs (Fig. 1). Importantly, the expression of a model antigen in mimetic mTECs is sufficient to induce T cell tolerance by inducing the negative selection of self-reactive T cells (71). In addition, mimetic mTECs have roles other than the establishment of self-tolerance in T cells. Studies have shown that thymic tuft cells play a role in the development and function of iNKT2 cells (69, 73). Endocrine mimetic mTECs are involved in the regulation of thymic cellularity, whereas microfold mimetic mTECs contribute to the generation of IgA⁺ plasma cells in the thymus (74).

The mTEC^{low} subpopulation also includes CCL21-expressing mTECs. Single cell-based transcriptome profiling of TECs has shown that a cluster with the *Ccl21a* transcript has the transcriptional signature of progenitor cells (21). However, whether CCL21⁺ mTECs are immature mTECs or post-Aire mature mTECs has not been directly investigated. Interestingly, our recent study revealed that CCL21-producing embryonic mTECs have the potential to give rise to Aire⁺ mTECs, and almost all mTECs are derived from cells that have transcribed *Ccl21a*, indicating that embryonic CCL21-expressing mTECs have progenitor activity (24). On the other hand, the differentiation potential of postnatal CCL21⁺ mTECs into Aire⁺ mTECs was not detected (24). Therefore, CCL21⁺ mTECs detected in the postnatal thymus may be terminally differentiated cells that lack progenitor activity. The conversion of thymocyte-attracting mTECs into antigen-presenting mTECs, such as Aire⁺ mTECs, may contribute to the diversity in the medullary thymic epithelium. More importantly, the establishment of self-tolerance in T cells is regulated by mTEC subpopulations including thymocyte-attracting CCL21-expressing mTECs and antigen-presenting mTECs such as Aire-expressing mTECs and post-Aire mimetic mTECs.

THYMIC INVOLUTION

Acute thymic involution

The thymus involutes transiently or chronically. Acute thymic involution is caused by several factors including radiation, chemotherapy, infection, and hormones; thus, upon the removal of these factors, thymus size is restored. It is well known that sex hormones affect thymus size. An increase in androgen production at puberty has been implicated in thymic involution, whereas androgen deprivation results in the thymus size recovery (75). T cell-specific disruption of the androgen receptor (AR) has little effect on thymus size, whereas TEC-specific disruption of AR results in thymic enlargement, suggesting that TECs are targets of androgen-driven thymic involution (76-78). It is also well known that the thymus undergoes involution during pregnancy, which may contribute to fetomaternal tolerance. Thymic involution during pregnancy is triggered by progesterone-induced alteration of TEC function. Progesterone receptor (Pgr) expression is increased and the transcriptome profiles of cTECs are altered during pregnancy, including the expression of such chemokines as *Ccl25*, *Ccl21*, *Ccl19*, and *Cxcl12*, which are involved in the thymus seeding of T progenitors (79-81). Importantly, thymic involution during pregnancy contributes to normal fertility, as the prevention of progesterone-mediated thymic involution by TEC-specific Pgr deficiency results in a reduced litter size in mice (81).

Age-related chronic thymic involution

Unlike acute thymic involution, age-related thymic involution is a chronic process (Fig. 2). It is generally accepted that thymus volume is largest at puberty and decreases with age. In humans, however, the loss of thymus tissue begins as early as one year of age, decreasing at a rate of 3% yearly until middle age and 1% yearly thereafter (82, 83). Along with the loss of thymus tissue, adipose tissue replaces the thymus tissue with age (83, 84). In contrast to the human thymus, the increase of adipose tissue in the mouse thymus is not remarkable. However, thymus mass peaks at approximately 4 weeks of age and gradually decreases thereafter. Epithelial-mesenchymal transition (EMT) is involved in adipogenesis in the thymus, which is dependent on the increased expression of PPAR γ , a master regulator of adipogenesis, in TECs (85, 86). It has been suggested that the age-dependent decline of ghrelin receptor-mediated signaling induces adipogenesis programming, including an increased PPAR γ expression, in the thymus, thus promoting EMT (87). Furthermore, a recent study has indicated that the interaction of CD147 on T cells and annexin A2 on TECs, triggered by TGF- β signaling, promotes the EMT process, and T cell-specific deficiency of CD147 delays thymic involution (88). Thus, the inhibition of PPAR γ expression in TECs or CD147-annexin A2 interaction is promising as a means of inhibiting EMT-mediated thymic involution.

Other studies have shown that age-related thymic inflammation is also associated with thymic involution, which may be triggered by the activation of inflammasomes through age-related intra-thymic accumulation of lipotoxic danger signals (89, 90). Mice deficient in the inflammasome component Nlrp3 or Asc are protected from thymic involution and immune senescence during aging (89).

It is also important to note that caloric restriction (CR), which is widely recognized to contribute to lifespan increase, prevents the increase of intrathymic adipogenesis and thymic involution in aged mice (91). CR decreases the expression of pro-EMT and proadipogenic regulators, such as fibroblast-specific protein-1, FoxC2, PPAR γ , and FABP4, in the thymus of aged mice (91). The increase in the expression of molecules related to the prevention of thymic involution, including ghrelin, leptin, and Igf1, in the

thymus of short-term calorie-restricted mice has also been reported (91, 92). A recent study on healthy humans has reported that a 14% reduction in calorie intake enhances thymic mass and function (93). It also induces transcriptional remodeling in adipose tissue, resulting in the upregulation of mitochondrial biogenesis, anti-inflammatory response, and pro-longevity effects (93). Interestingly, aged mice deficient in Pla2g7, a pro-inflammatory enzyme that is decreased in adipose tissue-resident macrophages in calorie-restricted humans, showed improved adipose tissue metabolism, decreased ceramide-mediated inflammasome activation, and protection from thymic involution (93). Therefore, CR-dependent metabolic regulation is another factor that controls age-related thymic involution. However, severe CR, such as a 40% reduction, can increase susceptibility to infections despite its protective effect against age-related thymic involution (91, 94, 95).

Age-related thymic involution is associated with various immunological consequences. Thymic involution decreases the *de novo* generation of naive T cells, which has been suggested to be involved in the decline of adaptive immune function. Elderly people are susceptible to microbial invasions they have not previously encountered, but maintain defenses against previously experienced infections; however, the decline in immune function is associated with increased susceptibility to infection, increased cancer incidence, and poor response to vaccines in the elderly. Mathematical modeling revealed a strong link between the age-dependent decline of T cell production in the thymus and

infectious diseases and cancers (4).

The reduction of T cell production due to thymic involution is related to the production of senescent T cells that show defective antigen response, biased secretion of proinflammatory cytokines, and resistance to apoptosis (96-98). Senescent T cells are also increased in chronic inflammatory environments, and the association of senescent T cells with inflammatory disorders, such as systemic lupus erythematosus, obesity-induced adiposity, insulin resistance, cardiovascular diseases, and cancers has been reported (96, 99-101), although the direct relationship between thymic involution and these diseases remains to be elucidated.

Aging of the thymus changes not only the production of T cells but also the functionality of cells in the thymus. Aged mouse models display dysregulated CD3 expression in thymic T cells, resulting in impaired TCR response, including failure of activation marker CD69 upregulation and reduced proliferation (102). Thymic DCs and macrophages show increased expression of proinflammatory genes with age, which are associated with age-related thymic inflammation (89, 90, 103). Moreover, the expression of Aire and Aire-dependent TSAs is diminished in aged thymic B cells, suggesting a link between aging and age-related autoimmune diseases (104). Importantly, it has been proposed that changes in thymic stromal cells contribute to age-related thymic involution. A previous study has demonstrated that the transplantation of bone marrow cells from young mice failed to increase *de novo* T cell generation in the thymus of aged recipient

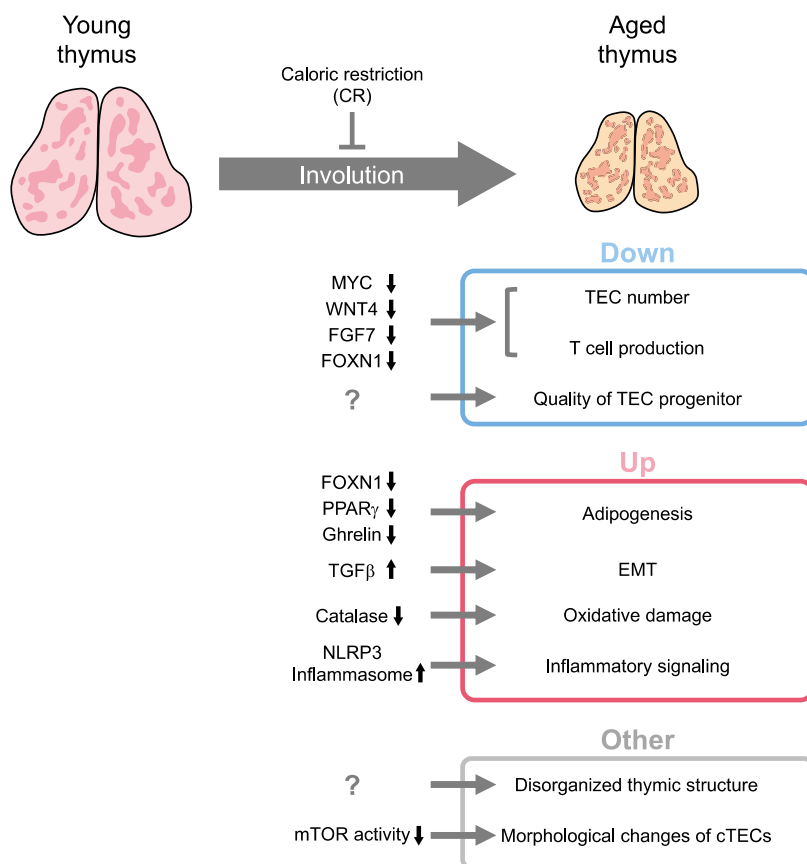


Figure 2. Age-related thymic involution.

Age-related thymic involution is accompanied by quantitative and qualitative changes in the thymus. Thymus volume gradually decreases with age after puberty. During thymic involution, the number of TECs, the quality of TEC progenitors, and the *de novo* generation of naive T cells are decreased, whereas adipose tissue is increased in the thymus. Representative factors involved in thymic involution are also shown.

mice (105). On the other hand, another study has revealed that hematopoietic cells from aged mice were able to generate T cells equivalent to those from young mice when fetal thymus was transplanted into aged or young recipient mice to create a thymic environment in which thymic stromal cells were derived from the fetus whereas hematopoietic cells were derived from the recipient mice (106). These findings suggest that the aging of thymic stromal cells rather than hematopoietic cells causes an age-related decline of T cell generation in the thymus. Moreover, accumulated evidence suggests that the degeneration of TECs drives thymic involution. In the following section, we summarize the age-dependent degeneration of TECs.

TEC DEGENERATION DURING AGE-RELATED THYMIC INVOLUTION

Age-related decline in TEC numbers

Age-related thymic involution is accompanied by a decrease in the number of TECs (107). This may be mediated by age-dependent changes in the transcriptional profile of molecules associated with cell proliferation. It has been reported that the activity of E2F3, a transcription factor critical for cell proliferation, is decreased in cTECs and the mTEC^{low} subset, and the decreased E2F3 activity and the downregulation of cell cycle regulators may result in reduced cell cycle progression in these cells, thus contributing to the reduction in TEC cellularity during early thymic involution (103). Transcription factor Myc is a key regulator of TECs, supporting rapid thymic development and TEC proliferation during embryonic stages. Myc activity in TECs is highest on day 13.5 of gestation and declines thereafter (108). The forced expression of Myc in TECs results in the long-term maintenance of an embryonic-specific transcriptional program and increases in thymus size and thymocyte number, suggesting that the maintenance of Myc activity may attenuate the reduction in thymus size and thymic function during thymic involution (108). The number of TECs is also regulated by growth factors secreted either by TECs or by surrounding cells such as mesenchymal cells. It was reported that the pharmacological supplementation of Fgfr2b ligand Fgf7 increased the number of TECs and the ectopic expression of Fgf7 in TECs resulted in a sustained increase in the number of TECs in the aged thymus (109-111). These findings suggest that growth factors also contribute to quantitative changes in TECs.

Age-dependent alteration of gene expression in TECs

It has been reported that Foxn1 is involved in postnatal thymus development by controlling both proliferation and differentiation of TECs in a dose-dependent manner and that the decrease in the number of Foxn1-expressing TECs is initiated at an early stage of thymic involution (112-115). The overexpression of Foxn1 in TECs under the control of keratin-14 promoter or Foxn1-Cre attenuates age-related thymic involution, whereas the overexpression of Foxn1 under the control of keratin-5 promoter does not attenuate thymic involution, although it prevents the decrease in TEC differentiation, particularly for mTECs (114, 116, 117). These studies suggest that the increased expression of Foxn1 contributes to the prevention of thymic involution even though the effect varies between TEC subpopulations, and that Foxn1-independent pathways also contribute to thymic involution.

Transcriptional profiling of TECs has revealed age-related alterations in various molecules, including cell cycle regulators, growth factors, and inflammatory cytokines, during thymic involution (103, 108). Furthermore, alterations of the gene expression of Wnt family members and Wnt signaling molecules have

been shown in early thymic involution, suggesting the involvement of the Wnt pathway in TEC degeneration (113, 116, 118). The reduction of Wnt4 expression in cTECs coincides with the reduction of Foxn1 expression during early thymic involution. An *in vitro* experiment has revealed that Wnt4 induces Foxn1 expression through the Wnt/ β -catenin pathway (119); thus, the reduction of Wnt4 expression may lead to a reduction of Foxn1 expression in TECs during thymic involution. However, the direct link between Wnt4 and Foxn1 expression during thymic involution is uncertain, as the disruption of the Wnt/ β -catenin pathway in TECs has no effect on Foxn1 expression *in vivo* (38, 39).

Recent single-cell transcriptome profiling has revealed previously unrecognized gene expression signatures in TECs during the aging process with alterations of both subset composition and transcriptional states of TECs during thymic involution (21). It has also been reported that the primary targets of aging are thymic epithelial progenitor cells rather than mature TECs, with changes in progenitor quality (21, 111). Current evidence suggests that age-related quiescence or reduced differentiation potential of TEC progenitors leads to a reduction in TEC maintenance, resulting in reduced thymic function.

Age-related alterations in TEC properties

In addition to the age-related alterations in the number and transcriptome profiles of TECs, alterations in TEC properties, including morphology, may also be involved in thymic involution. Morphological analysis of individual TECs has shown that the morphology of cTECs changed dramatically, their projections contracting with age; this phenomenon was not found in mTECs (57). The change in cTEC morphology may be regulated by mTOR signaling, a cell and tissue size regulator, as pathway analysis of transcriptome profiles has shown that the mTOR signaling pathway decreased with age and increased dramatically in the early stages of TEC regeneration (57). The dramatic change in cTEC structure may contribute to the reduction in thymic size during thymic involution in addition to increased cell death or decreased cell proliferation in aged TECs.

In cTECs undergoing intense metabolic activity due to lymphocyte proliferation, a deficiency of antioxidant enzyme catalase increases susceptibility to oxidative damage, resulting in accelerated thymic involution (120). The genetic complementation of catalase in thymic stromal cells attenuates age-related rapid thymic atrophy, suggesting that the levels of oxidative damage contribute in part to thymic involution (120). On the other hand, a recent study has indicated that the overexpression of catalase reduced autophagy in thymic stromal cells and impaired thymocyte clonal deletion, resulting in the increased infiltration of autoreactive T cells in the lung and liver (121). These findings suggest that low levels of catalase promote high levels of autophagic activity in thymic stromal cells, which are required for self-antigen presentation and T cell selection to regulate central T cell tolerance. However, autophagic activity decreases with age and is associated with senescence in some cells and tissues (122). Moreover, autophagy is induced by the inhibition of mTOR signaling (123), which may be involved in the regulation of cTEC morphology (57). Future studies should elucidate how oxidative damage, autophagic activity, and mTOR-mediated metabolic regulation are linked to age-related alterations in TEC properties during thymic involution.

CONCLUSION

Despite playing a critical role in immune system establishment, the function of the thymus remained unknown until the

1960s. For a long time, the thymus was considered a vestigial organ that lost its original function because of size diminishment in adults. Consequently, the thymus was one of the last organs in our body for which its function was definitively established. Furthermore, research on TECs lagged behind the study of T cells, likely owing to the challenges in isolating TECs for detailed molecular analyses. Today, it is widely accepted that the thymic epithelium mainly regulates the generation of T cells in the thymus and that the optimal function of the thymic epithelium is important for thymus function. Thus, it is essential to understand the mechanism responsible for the establishment of thymus function by the epithelium. However, much remains unknown as to why the thymus undergoes the earliest age-related chronic involution in the body. In the human body, an enormous number of T cells are generated daily in the thymus, but most of them are eliminated by apoptosis due to thymic selection, and that process probably consumes a large amount of energy (124). In this regard, thymic involution may reduce energy consumption in the thymus, allowing energy to be used for other biological processes, thereby benefitting other organs. Alternatively, it has been speculated that thymic involution reduces the risk of T cell leukemia. As the generation of hematopoietic cells in the bone marrow decreases with age, thymic involution may prevent T cells from residing in inappropriate intrathymic niches for long periods, thus preventing the creation of pro-leukemic environments in the thymus (125). Age-related thymic involution is involved in immunosenescence and is considered to be detrimental to the body. The development of ways to promote thymic rejuvenation in the elderly is anticipated; however, it is necessary to elucidate the significance of age-related thymic involution to understand aging and treat age-dependent changes in biological function.

COI STATEMENT

The authors declare no conflicts of interest associated with this manuscript.

ACKNOWLEDGMENTS

This work was supported by the JSPS KAKENHI 22K06900, the JSPS Bilateral Program 120219928, and the JST PRESTO Grant 22712940 (I.O.).

REFERENCES

- Abramson J, Anderson G : Thymic Epithelial Cells. *Annu Rev Immunol* 35 : 85-118, 2017
- Aronson M : Hypothesis : involution of the thymus with aging-programmed and beneficial. *Thymus* 18 : 7-13, 1991
- Shanley DP, Aw D, Manley NR, Palmer DB : An evolutionary perspective on the mechanisms of immunosenescence. *Trends Immunol* 30 : 374-381, 2009
- Palmer S, Albergante L, Blackburn CC, Newman TJ : Thymic involution and rising disease incidence with age. *Proc Natl Acad Sci U S A* 115 : 1883-1888, 2018
- Elyahu Y, Monsonogo A : Thymus involution sets the clock of the aging T-cell landscape : Implications for declined immunity and tissue repair. *Ageing Res Rev* 65 : 101231, 2021
- Guo L, Li X, Gould T, Wang ZY, Cao W : T cell aging and Alzheimer's disease. *Front Immunol* 14 : 1154699, 2023
- Bleul CC, Corbeaux T, Reuter A, Fisch P, Monting JS, Boehm T : Formation of a functional thymus initiated by a postnatal epithelial progenitor cell. *Nature* 441 : 992-996, 2006
- Rossi SW, Jenkinson WE, Anderson G, Jenkinson EJ : Clonal analysis reveals a common progenitor for thymic cortical and medullary epithelium. *Nature* 441 : 988-991, 2006
- Nehls M, Kyewski B, Messerle M, Waldschutz R, Schuddekopf K, Smith AJ, Boehm T : Two genetically separable steps in the differentiation of thymic epithelium. *Science* 272 : 886-889, 1996
- Zuklys S, Handel A, Zhanybekova S, Govani F, Keller M, Maio S, Mayer CE, Teh HY, Hafen K, Gallone G, Barthlott T, Ponting CP, Hollander GA : Foxn1 regulates key target genes essential for T cell development in postnatal thymic epithelial cells. *Nat Immunol* 17 : 1206-1215, 2016
- Baik S, Jenkinson EJ, Lane PJ, Anderson G, Jenkinson WE : Generation of both cortical and Aire(+) medullary thymic epithelial compartments from CD205(+) progenitors. *Eur J Immunol* 43 : 589-594, 2013
- Ohigashi I, Zuklys S, Sakata M, Mayer CE, Zhanybekova S, Murata S, Tanaka K, Hollander GA, Takahama Y : Aire-expressing thymic medullary epithelial cells originate from beta5t-expressing progenitor cells. *Proc Natl Acad Sci U S A* 110 : 9885-9890, 2013
- Ulyanchenko S, O'Neill KE, Medley T, Farley AM, Vaidya HJ, Cook AM, Blair NF, Blackburn CC : Identification of a Bipotent Epithelial Progenitor Population in the Adult Thymus. *Cell Rep* 14 : 2819-2832, 2016
- Wong K, Lister NL, Barsanti M, Lim JM, Hammett MV, Khong DM, Siatskas C, Gray DH, Boyd RL, Chidgey AP : Multilineage potential and self-renewal define an epithelial progenitor cell population in the adult thymus. *Cell Rep* 8 : 1198-1209, 2014
- Ohigashi I, Zuklys S, Sakata M, Mayer CE, Hamazaki Y, Minato N, Hollander GA, Takahama Y : Adult Thymic Medullary Epithelium Is Maintained and Regenerated by Lineage-Restricted Cells Rather Than Bipotent Progenitors. *Cell Rep* 13 : 1432-1443, 2015
- Mayer CE, Zuklys S, Zhanybekova S, Ohigashi I, Teh HY, Sansom SN, Shikama-Dorn N, Hafen K, Macaulay IC, Deadman ME, Ponting CP, Takahama Y, Hollander GA : Dynamic spatio-temporal contribution of single beta5t+ cortical epithelial precursors to the thymus medulla. *Eur J Immunol* 46 : 846-856, 2016
- Sekai M, Hamazaki Y, Minato N : Medullary thymic epithelial stem cells maintain a functional thymus to ensure life-long central T cell tolerance. *Immunity* 41 : 753-761, 2014
- Baik S, Sekai M, Hamazaki Y, Jenkinson WE, Anderson G : Relb acts downstream of medullary thymic epithelial stem cells and is essential for the emergence of RANK(+) medullary epithelial progenitors. *Eur J Immunol* 46 : 857-862, 2016
- Rossi SW, Kim MY, Leibbrandt A, Parnell SM, Jenkinson WE, Glanville SH, McConnell FM, Scott HS, Penninger JM, Jenkinson EJ, Lane PJ, Anderson G : RANK signals from CD4(+)3(-) inducer cells regulate development of Aire-expressing epithelial cells in the thymic medulla. *J Exp Med* 204 : 1267-1272, 2007
- Farley AM, Chengrui A, Palmer S, Liu D, Kousa AI, Rouse P, Major V, Sweetman J, Morys J, Corsinotti A, Nichols J, Ure J, McLay R, Boulter L, Chapman SJ, Tomlinson SR, Blackburn CC : Thymic epithelial cell fate and potency in early organogenesis assessed by single cell transcriptional and functional analysis. *Front Immunol* 14 : 1202163, 2023
- Baran-Gale J, Morgan MD, Maio S, Dhalla F, Calvo-Asensio I, Deadman ME, Handel AE, Maynard A, Chen S, Green F, Sit RV, Neff NF, Darmanis S, Tan W, May AP, Marioni JC, Ponting CP, Hollander GA : Ageing compromises mouse

- thymus function and remodels epithelial cell differentiation. *Elife* 9 : e56221, 2020
22. Onder L, Nindl V, Scandella E, Chai Q, Cheng HW, Caviezel-Firner S, Novkovic M, Bomze D, Maier R, Mair F, Ledermann B, Becher B, Waisman A, Ludewig B : Alternative NF-kappaB signaling regulates mTEC differentiation from podoplanin-expressing precursors in the cortico-medullary junction. *Eur J Immunol* 45 : 2218-2231, 2015
 23. Lucas B, White AJ, Klein F, Veiga-Villauriz C, Handel A, Bacon A, Cosway EJ, James KD, Parnell SM, Ohigashi I, Takahama Y, Jenkinson WE, Hollander GA, Lu WY, Anderson G : Embryonic keratin19(+) progenitors generate multiple functionally distinct progeny to maintain epithelial diversity in the adult thymus medulla. *Nat Commun* 14 : 2066, 2023
 24. Ohigashi I, White AJ, Yang MT, Fujimori S, Tanaka Y, Jacques A, Kiyonari H, Matsushita Y, Turan S, Kelly MC, Anderson G, Takahama Y : Developmental conversion of thymocyte-attracting cells into self-antigen-displaying cells in embryonic thymus medulla epithelium. *Elife* 12 : PR92552, 2023
 25. Wells KL, Miller CN, Gschwind AR, Wei W, Phipps JD, Anderson MS, Steinmetz LM : Combined transient ablation and single-cell RNA-sequencing reveals the development of medullary thymic epithelial cells. *Elife* 9 : e60188, 2020
 26. Li J, Gordon J, Chen ELY, Xiao S, Wu L, Zuniga-Pflucker JC, Manley NR : NOTCH1 signaling establishes the medullary thymic epithelial cell progenitor pool during mouse fetal development. *Development* 147, 2020
 27. Liu D, Kousa AI, O'Neill KE, Rouse P, Popis M, Farley AM, Tomlinson SR, Ulyanchenko S, Guillemot F, Seymour PA, Jorgensen MC, Serup P, Koch U, Radtke F, Blackburn CC : Canonical Notch signaling controls the early thymic epithelial progenitor cell state and emergence of the medullary epithelial lineage in fetal thymus development. *Development* 147, 2020
 28. Akiyama T, Shimo Y, Yanai H, Qin J, Ohshima D, Maruyama Y, Asaumi Y, Kitazawa J, Takayanagi H, Penninger JM, Matsumoto M, Nitta T, Takahama Y, Inoue J : The tumor necrosis factor family receptors RANK and CD40 cooperatively establish the thymic medullary micro-environment and self-tolerance. *Immunity* 29 : 423-437, 2008
 29. Hikosaka Y, Nitta T, Ohigashi I, Yano K, Ishimaru N, Hayashi Y, Matsumoto M, Matsuo K, Penninger JM, Takayanagi H, Yokota Y, Yamada H, Yoshikai Y, Inoue J, Akiyama T, Takahama Y : The cytokine RANKL produced by positively selected thymocytes fosters medullary thymic epithelial cells that express autoimmune regulator. *Immunity* 29 : 438-450, 2008
 30. Goldfarb Y, Kadouri N, Levi B, Sela A, Herzig Y, Cohen RN, Hollenberg AN, Abramson J : HDAC3 Is a Master Regulator of mTEC Development. *Cell Rep* 15 : 651-665, 2016
 31. Barthlott T, Handel AE, Teh HY, Wirasinha RC, Hafen K, Zuklys S, Roch B, Orkin SH, de Villartay JP, Daley SR, Hollander GA : Indispensable epigenetic control of thymic epithelial cell development and function by polycomb repressive complex 2. *Nat Commun* 12 : 3933, 2021
 32. Shakib S, Desanti GE, Jenkinson WE, Parnell SM, Jenkinson EJ, Anderson G : Checkpoints in the development of thymic cortical epithelial cells. *J Immunol* 182 : 130-137, 2009
 33. Oosterwegel M, van de Wetering M, Dooijes D, Klomp L, Winoto A, Georgopoulos K, Meijlink F, Clevers H : Cloning of murine TCF-1, a T cell-specific transcription factor interacting with functional motifs in the CD3-epsilon and T cell receptor alpha enhancers. *J Exp Med* 173 : 1133-1142, 1991
 34. Travis A, Amsterdam A, Belanger C, Grosschedl R : LEF-1, a gene encoding a lymphoid-specific protein with an HMG domain, regulates T-cell receptor alpha enhancer function [corrected]. *Genes Dev* 5 : 880-894, 1991
 35. Pongracz J, Hare K, Harman B, Anderson G, Jenkinson EJ : Thymic epithelial cells provide WNT signals to developing thymocytes. *Eur J Immunol* 33 : 1949-1956, 2003
 36. Heinonen KM, Vanegas JR, Brochu S, Shan J, Vainio SJ, Perreault C : Wnt4 regulates thymic cellularity through the expansion of thymic epithelial cells and early thymic progenitors. *Blood* 118 : 5163-5173, 2011
 37. Liang CC, You LR, Yen JJ, Liao NS, Yang-Yen HF, Chen CM : Thymic epithelial beta-catenin is required for adult thymic homeostasis and function. *Immunol Cell Biol* 91 : 511-523, 2013
 38. Swann JB, Happe C, Boehm T : Elevated levels of Wnt signaling disrupt thymus morphogenesis and function. *Sci Rep* 7 : 785, 2017
 39. Fujimori S, Ohigashi I, Abe H, Matsushita Y, Katagiri T, Taketo MM, Takahama Y, Takada S : Fine-tuning of beta-catenin in mouse thymic epithelial cells is required for postnatal T-cell development. *Elife* 11 : e69088, 2022
 40. Zuklys S, Gill J, Keller MP, Hauri-Hohl M, Zhanybekova S, Balciunaite G, Na KJ, Jeker LT, Hafen K, Tsukamoto N, Amagai T, Taketo MM, Krenger W, Hollander GA : Stabilized beta-catenin in thymic epithelial cells blocks thymus development and function. *J Immunol* 182 : 2997-3007, 2009
 41. Krueger A, Willenzon S, Lyszkiewicz M, Kremmer E, Forster R : CC chemokine receptor 7 and 9 double-deficient hematopoietic progenitors are severely impaired in seeding the adult thymus. *Blood* 115 : 1906-1912, 2010
 42. Zlotoff DA, Sambandam A, Logan TD, Bell JJ, Schwarz BA, Bhandoola A : CCR7 and CCR9 together recruit hematopoietic progenitors to the adult thymus. *Blood* 115 : 1897-1905, 2010
 43. Calderon L, Boehm T : Three chemokine receptors cooperatively regulate homing of hematopoietic progenitors to the embryonic mouse thymus. *Proc Natl Acad Sci U S A* 108 : 7517-7522, 2011
 44. Koch U, Fiorini E, Benedito R, Besseyrias V, Schuster-Gossler K, Pierres M, Manley NR, Duarte A, Macdonald HR, Radtke F : Delta-like 4 is the essential, nonredundant ligand for Notch1 during thymic T cell lineage commitment. *J Exp Med* 205 : 2515-2523, 2008
 45. Alves NL, Richard-Le Goff O, Huntington ND, Sousa AP, Ribeiro VS, Bordack A, Vives FL, Peduto L, Chidgey A, Cumano A, Boyd R, Eberl G, Di Santo JP : Characterization of the thymic IL-7 niche in vivo. *Proc Natl Acad Sci U S A* 106 : 1512-1517, 2009
 46. Honey K, Rudensky AY : Lysosomal cysteine proteases regulate antigen presentation. *Nat Rev Immunol* 3 : 472-482, 2003
 47. Gommeaux J, Gregoire C, Nguessan P, Richelme M, Malissen M, Guerder S, Malissen B, Carrier A : Thymus-specific serine protease regulates positive selection of a subset of CD4+ thymocytes. *Eur J Immunol* 39 : 956-964, 2009
 48. Murata S, Sasaki K, Kishimoto T, Niwa S, Hayashi H, Takahama Y, Tanaka K : Regulation of CD8+ T cell development by thymus-specific proteasomes. *Science* 316 : 1349-1353, 2007
 49. Sasaki K, Takada K, Ohte Y, Kondo H, Sorimachi H, Tanaka K, Takahama Y, Murata S : Thymoproteasomes produce unique peptide motifs for positive selection of CD8(+) T cells. *Nat Commun* 6 : 7484, 2015

50. Ripen AM, Nitta T, Murata S, Tanaka K, Takahama Y : Ontogeny of thymic cortical epithelial cells expressing the thymoproteasome subunit beta5t. *Eur J Immunol* 41 : 1278-1287, 2011
51. Uddin MM, Ohigashi I, Motosugi R, Nakayama T, Sakata M, Hamazaki J, Nishito Y, Rode I, Tanaka K, Takemoto T, Murata S, Takahama Y : Foxn1-beta5t transcriptional axis controls CD8(+) T-cell production in the thymus. *Nat Commun* 8 : 14419, 2017
52. Marrack P, Kappler J : The T cell receptor. *Science* 238 : 1073-1079, 1987
53. Kincaid EZ, Murata S, Tanaka K, Rock KL : Specialized proteasome subunits have an essential role in the thymic selection of CD8(+) T cells. *Nat Immunol* 17 : 938-945, 2016
54. Tomaru U, Konno S, Miyajima S, Kimoto R, Onodera M, Kiuchi S, Murata S, Ishizu A, Kasahara M : Restricted Expression of the Thymoproteasome Is Required for Thymic Selection and Peripheral Homeostasis of CD8(+) T Cells. *Cell Rep* 26 : 639-651 e632, 2019
55. Ohigashi I, Frantzeskakis M, Jacques A, Fujimori S, Ushio A, Yamashita F, Ishimaru N, Yin D, Cam M, Kelly MC, Awasthi P, Takada K, Takahama Y : The thymoproteasome hardwires the TCR repertoire of CD8+ T cells in the cortex independent of negative selection. *J Exp Med* 218, 2021
56. Nakagawa Y, Ohigashi I, Nitta T, Sakata M, Tanaka K, Murata S, Kanagawa O, Takahama Y : Thymic nurse cells provide microenvironment for secondary T cell receptor alpha rearrangement in cortical thymocytes. *Proc Natl Acad Sci U S A* 109 : 20572-20577, 2012
57. Venables T, Griffith AV, DeAraujo A, Petrie HT : Dynamic changes in epithelial cell morphology control thymic organ size during atrophy and regeneration. *Nat Commun* 10 : 4402, 2019
58. Ueno T, Saito F, Gray DH, Kuse S, Hieshima K, Nakano H, Kakiuchi T, Lipp M, Boyd RL, Takahama Y : CCR7 signals are essential for cortex-medulla migration of developing thymocytes. *J Exp Med* 200 : 493-505, 2004
59. Vassileva G, Soto H, Zlotnik A, Nakano H, Kakiuchi T, Hedrick JA, Lira SA : The reduced expression of 6Ckine in the plt mouse results from the deletion of one of two 6Ckine genes. *J Exp Med* 190 : 1183-1188, 1999
60. Kozai M, Kubo Y, Katakai T, Kondo H, Kiyonari H, Schaeuble K, Luther SA, Ishimaru N, Ohigashi I, Takahama Y : Essential role of CCL21 in establishment of central self-tolerance in T cells. *J Exp Med* 214 : 1925-1935, 2017
61. Nagamine K, Peterson P, Scott HS, Kudoh J, Minoshima S, Heino M, Krohn KJ, Lalioti MD, Mullis PE, Antonarakis SE, Kawasaki K, Asakawa S, Ito F, Shimizu N : Positional cloning of the APECED gene. *Nat Genet* 17 : 393-398, 1997
62. Aaltonen J, Björns P, Perheentupa J, Horelli-Kuitunen N, Palotie A, Peltonen L, Lee YS, Francis F, Henning S, Thiel C, Leharach H, Yaspo ML : An autoimmune disease, APECED, caused by mutations in a novel gene featuring two PHD-type zinc-finger domains. *Nat Genet* 17 : 399-403, 1997
63. Anderson MS, Venzani ES, Klein L, Chen Z, Berzins SP, Turley SJ, von Boehmer H, Bronson R, Dierich A, Benoist C, Mathis D : Projection of an immunological self shadow within the thymus by the aire protein. *Science* 298 : 1395-1401, 2002
64. Takaba H, Morishita Y, Tomofuji Y, Danks L, Nitta T, Komatsu N, Kodama T, Takayanagi H : Fezf2 Orchestrates a Thymic Program of Self-Antigen Expression for Immune Tolerance. *Cell* 163 : 975-987, 2015
65. Abramson J, Anderson G : Thymic Epithelial Cells. *Annu Rev Immunol* 35 : 85-118, 2017
66. Lammers S, Barrera V, Brennecke P, Miller C, Yoon J, Balolong J, Anderson MS, Ho Sui S, Steinmetz LM, von Andrian UH, Rattay K : Ehf and Fezf2 regulate late medullary thymic epithelial cell and thymic tuft cell development. *Front Immunol* 14 : 1277365, 2024
67. Metzger TC, Khan IS, Gardner JM, Mouchess ML, Johannes KP, Krawisz AK, Skrzypczynska KM, Anderson MS : Lineage tracing and cell ablation identify a post-Aire-expressing thymic epithelial cell population. *Cell Rep* 5 : 166-179, 2013
68. Farr AG, Rudensky A : Medullary thymic epithelium : a mosaic of epithelial "self"? *J Exp Med* 188 : 1-4, 1998
69. Miller CN, Proekt I, von Moltke J, Wells KL, Rajpurkar AR, Wang H, Rattay K, Khan IS, Metzger TC, Pollack JL, Fries AC, Lwin WW, Wigton EJ, Parent AV, Kyewski B, Erle DJ, Hogquist KA, Steinmetz LM, Locksley RM, Anderson MS : Thymic tuft cells promote an IL-4-enriched medulla and shape thymocyte development. *Nature* 559 : 627-631, 2018
70. Bornstein C, Nevo S, Giladi A, Kadouri N, Pouzolles M, Gerbe F, David E, Machado A, Chuprin A, Toth B, Goldberg O, Itzkovitz S, Taylor N, Jay P, Zimmermann VS, Abramson J, Amit I : Single-cell mapping of the thymic stroma identifies IL-25-producing tuft epithelial cells. *Nature* 559 : 622-626, 2018
71. Michelson DA, Hase K, Kaisho T, Benoist C, Mathis D : Thymic epithelial cells co-opt lineage-defining transcription factors to eliminate autoreactive T cells. *Cell* 185 : 2542-2558 e2518, 2022
72. Mino N, Muro R, Ota A, Nitta S, Lefebvre V, Nitta T, Fujio K, Takayanagi H : The transcription factor Sox4 is required for thymic tuft cell development. *Int Immunol* 34 : 45-52, 2022
73. Lucas B, White AJ, Cosway EJ, Parnell SM, James KD, Jones ND, Ohigashi I, Takahama Y, Jenkinson WE, Anderson G : Diversity in medullary thymic epithelial cells controls the activity and availability of iNKT cells. *Nat Commun* 11 : 2198, 2020
74. Givony T, Leshkowitz D, Del Castillo D, Nevo S, Kadouri N, Dassa B, Gruper Y, Khalaila R, Ben-Nun O, Gome T, Dobes J, Ben-Dor S, Kedmi M, Keren-Shaul H, Heffner-Krausz R, Porat Z, Golani O, Addadi Y, Brenner O, Lo DD, Goldfarb Y, Abramson J : Thymic mimetic cells function beyond self-tolerance. *Nature* 622 : 164-172, 2023
75. Sutherland JS, Goldberg GL, Hammett MV, Uldrich AP, Berzins SP, Heng TS, Blazar BR, Millar JL, Malin MA, Chidgey AP, Boyd RL : Activation of thymic regeneration in mice and humans following androgen blockade. *J Immunol* 175 : 2741-2753, 2005
76. Olsen NJ, Olson G, Viselli SM, Gu X, Kovacs WJ : Androgen receptors in thymic epithelium modulate thymus size and thymocyte development. *Endocrinology* 142 : 1278-1283, 2001
77. Lai KP, Lai JJ, Chang P, Altuwajri S, Hsu JW, Chuang KH, Shyr CR, Yeh S, Chang C : Targeting thymic epithelia AR enhances T-cell reconstitution and bone marrow transplant grafting efficacy. *Mol Endocrinol* 27 : 25-37, 2013
78. Wilhelmson AS, Lantero Rodriguez M, Johansson I, Svedlund Eriksson E, Stubelius A, Lindgren S, Fagman JB, Fink PJ, Carlsten H, Ekwall O, Tivesten A : Androgen Receptors in Epithelial Cells Regulate Thymopoiesis and Recent Thymic Emigrants in Male Mice. *Front Immunol* 11 : 1342, 2020
79. Laan M, Haljasorg U, Kisand K, Salumets A, Peterson P : Pregnancy-induced thymic involution is associated with suppression of chemokines essential for T-lymphoid

- progenitor homing. *Eur J Immunol* 46 : 2008-2017, 2016
80. Dumont-Lagace M, Daouda T, Depoers L, Zumer J, Benslimane Y, Brochu S, Harrington L, Lemieux S, Perreault C : Qualitative Changes in Cortical Thymic Epithelial Cells Drive Postpartum Thymic Regeneration. *Front Immunol* 10 : 3118, 2020
 81. Ahn SH, Nguyen SL, Kim TH, Jeong JW, Arora R, Lydon JP, Petroff MG : Nuclear Progesterone Receptor Expressed by the Cortical Thymic Epithelial Cells Dictates Thymus Involution in Murine Pregnancy. *Front Endocrinol (Lausanne)* 13 : 846226, 2022
 82. Steinmann GG, Klaus B, Muller-Hermelink HK : The involution of the ageing human thymic epithelium is independent of puberty. A morphometric study. *Scand J Immunol* 22 : 563-575, 1985
 83. Lynch HE, Goldberg GL, Chidgey A, Van den Brink MR, Boyd R, Sempowski GD : Thymic involution and immune reconstitution. *Trends Immunol* 30 : 366-373, 2009
 84. George AJ, Ritter MA : Thymic involution with ageing : obsolescence or good housekeeping? *Immunol Today* 17 : 267-272, 1996
 85. Kvell K, Varecza Z, Bartis D, Hesse S, Parnell S, Anderson G, Jenkinson EJ, Pongracz JE : Wnt4 and LAP2alpha as pacemakers of thymic epithelial senescence. *PLoS One* 5 : e10701, 2010
 86. Ernszt D, Banfai K, Kellermayer Z, Pap A, Lord JM, Pongracz JE, Kvell K : PPARgamma Deficiency Counteracts Thymic Senescence. *Front Immunol* 8 : 1515, 2017
 87. Youm YH, Yang H, Sun Y, Smith RG, Manley NR, Vandanmagsar B, Dixit VD : Deficient ghrelin receptor-mediated signaling compromises thymic stromal cell microenvironment by accelerating thymic adiposity. *J Biol Chem* 284 : 7068-7077, 2009
 88. Chen R, Wang K, Feng Z, Zhang MY, Wu J, Geng JJ, Chen ZN : CD147 deficiency in T cells prevents thymic involution by inhibiting the EMT process in TECs in the presence of TGFbeta. *Cell Mol Immunol* 18 : 171-181, 2021
 89. Youm YH, Kanneganti TD, Vandanmagsar B, Zhu X, Ravussin A, Adijiang A, Owen JS, Thomas MJ, Francis J, Parks JS, Dixit VD : The Nlrp3 inflammasome promotes age-related thymic demise and immunosenescence. *Cell Rep* 1 : 56-68, 2012
 90. Yue S, Zheng X, Zheng Y : Cell-type-specific role of lamin-B1 in thymus development and its inflammation-driven reduction in thymus aging. *Aging Cell* 18 : e12952, 2019
 91. Yang H, Youm YH, Dixit VD : Inhibition of thymic adipogenesis by caloric restriction is coupled with reduction in age-related thymic involution. *J Immunol* 183 : 3040-3052, 2009
 92. Omeroglu Ulu Z, Ulu S, Dogan S, Guvenc Tuna B, Ozdemir Ozgenturk N : Transcriptome Analysis of the Thymus in Short-Term Calorie-Restricted Mice Using RNA-seq. *Int J Genomics* 2018 : 7647980, 2018
 93. Spadaro O, Youm Y, Shchukina I, Ryu S, Sidorov S, Ravussin A, Nguyen K, Aladyeva E, Predeus AN, Smith SR, Ravussin E, Galban C, Artyomov MN, Dixit VD : Caloric restriction in humans reveals immunometabolic regulators of health span. *Science* 375 : 671-677, 2022
 94. Kristan DM : Chronic calorie restriction increases susceptibility of laboratory mice (*Mus musculus*) to a primary intestinal parasite infection. *Aging Cell* 6 : 817-825, 2007
 95. Gardner EM : Caloric restriction decreases survival of aged mice in response to primary influenza infection. *J Gerontol A Biol Sci Med Sci* 60 : 688-694, 2005
 96. Tahir S, Fukushima Y, Sakamoto K, Sato K, Fujita H, Inoue J, Uede T, Hamazaki Y, Hattori M, Minato N : A CD153+CD4+ T follicular cell population with cell-senescence features plays a crucial role in lupus pathogenesis via osteopontin production. *J Immunol* 194 : 5725-5735, 2015
 97. Akbar AN, Henson SM, Lanna A : Senescence of T Lymphocytes : Implications for Enhancing Human Immunity. *Trends Immunol* 37 : 866-876, 2016
 98. Sato K, Kato A, Sekai M, Hamazaki Y, Minato N : Physiologic Thymic Involution Underlies Age-Dependent Accumulation of Senescence-Associated CD4(+) T Cells. *J Immunol* 199 : 138-148, 2017
 99. Shirakawa K, Yan X, Shinmura K, Endo J, Kataoka M, Katsumata Y, Yamamoto T, Anzai A, Isobe S, Yoshida N, Itoh H, Manabe I, Sekai M, Hamazaki Y, Fukuda K, Minato N, Sano M : Obesity accelerates T cell senescence in murine visceral adipose tissue. *J Clin Invest* 126 : 4626-4639, 2016
 100. Tsukishiro T, Donnenberg AD, Whiteside TL : Rapid turnover of the CD8(+)/CD28(-) T-cell subset of effector cells in the circulation of patients with head and neck cancer. *Cancer Immunol Immunother* 52 : 599-607, 2003
 101. Filaci G, Fenoglio D, Fravega M, Ansaldo G, Borgonovo G, Traverso P, Villaggio B, Ferrera A, Kunkl A, Rizzi M, Ferrera F, Balestra P, Ghio M, Contini P, Setti M, Olive D, Azzarone B, Carmignani G, Ravetti JL, Torre G, Indiveri F : CD8+ CD28- T regulatory lymphocytes inhibiting T cell proliferative and cytotoxic functions infiltrate human cancers. *J Immunol* 179 : 4323-4334, 2007
 102. Aw D, Silva AB, Palmer DB : The effect of age on the phenotype and function of developing thymocytes. *J Comp Pathol* 142 Suppl 1 : S45-59, 2010
 103. Ki S, Park D, Selden HJ, Seita J, Chung H, Kim J, Iyer VR, Ehrlich LIR : Global transcriptional profiling reveals distinct functions of thymic stromal subsets and age-related changes during thymic involution. *Cell Rep* 9 : 402-415, 2014
 104. Cepeda S, Cantu C, Orozco S, Xiao Y, Brown Z, Semwal MK, Venables T, Anderson MS, Griffith AV : Age-Associated Decline in Thymic B Cell Expression of Aire and Aire-Dependent Self-Antigens. *Cell Rep* 22 : 1276-1287, 2018
 105. Zhu X, Gui J, Dohkan J, Cheng L, Barnes PF, Su DM : Lymphohematopoietic progenitors do not have a synchronized defect with age-related thymic involution. *Aging Cell* 6 : 663-672, 2007
 106. Gui J, Zhu X, Dohkan J, Cheng L, Barnes PF, Su DM : The aged thymus shows normal recruitment of lymphohematopoietic progenitors but has defects in thymic epithelial cells. *Int Immunol* 19 : 1201-1211, 2007
 107. Gray DH, Seach N, Ueno T, Milton MK, Liston A, Lew AM, Goodnow CC, Boyd RL : Developmental kinetics, turnover, and stimulatory capacity of thymic epithelial cells. *Blood* 108 : 3777-3785, 2006
 108. Cowan JE, Malin J, Zhao Y, Seedhom MO, Harly C, Ohigashi I, Kelly M, Takahama Y, Yewdell JW, Cam M, Bhandoola A : Myc controls a distinct transcriptional program in fetal thymic epithelial cells that determines thymus growth. *Nat Commun* 10 : 5498, 2019
 109. Min D, Panoskaltis-Mortari A, Kuro OM, Hollander GA, Blazar BR, Weinberg KI : Sustained thymopoiesis and improvement in functional immunity induced by exogenous KGF administration in murine models of aging. *Blood* 109 : 2529-2537, 2007
 110. Rossi SW, Jeker LT, Ueno T, Kuse S, Keller MP, Zuklys S, Gudkov AV, Takahama Y, Krenger W, Blazar BR, Hollander GA : Keratinocyte growth factor (KGF) enhances postnatal T-cell development via enhancements in proliferation and

- function of thymic epithelial cells. *Blood* 109 : 3803-3811, 2007
111. Nusser A, Sagar, Swann JB, Krauth B, Diekhoff D, Calderon L, Happe C, Grun D, Boehm T : Developmental dynamics of two bipotent thymic epithelial progenitor types. *Nature* 606 : 165-171, 2022
112. Ortman CL, Dittmar KA, Witte PL, Le PT : Molecular characterization of the mouse involuted thymus : aberrations in expression of transcription regulators in thymocyte and epithelial compartments. *Int Immunol* 14 : 813-822, 2002
113. Itoi M, Tsukamoto N, Amagai T : Expression of Dll4 and CCL25 in Foxn1-negative epithelial cells in the post-natal thymus. *Int Immunol* 19 : 127-132, 2006
114. Zook EC, Krishack PA, Zhang S, Zeleznik-Le NJ, Firulli AB, Witte PL, Le PT : Overexpression of Foxn1 attenuates age-associated thymic involution and prevents the expansion of peripheral CD4 memory T cells. *Blood* 118 : 5723-5731, 2011
115. Chen L, Xiao S, Manley NR : Foxn1 is required to maintain the postnatal thymic microenvironment in a dosage-sensitive manner. *Blood* 113 : 567-574, 2009
116. Bredenkamp N, Nowell CS, Blackburn CC : Regeneration of the aged thymus by a single transcription factor. *Development* 141 : 1627-1637, 2014
117. Li J, Wachsmuth LP, Xiao S, Condie BG, Manley NR : Foxn1 overexpression promotes thymic epithelial progenitor cell proliferation and mTEC maintenance, but does not prevent thymic involution. *Development* 150, 2023
118. Griffith AV, Fallahi M, Venables T, Petrie HT : Persistent degenerative changes in thymic organ function revealed by an inducible model of organ regrowth. *Aging Cell* 11 : 169-177, 2012
119. Balciunaite G, Keller MP, Balciunaite E, Piali L, Zuklys S, Mathieu YD, Gill J, Boyd R, Sussman DJ, Hollander GA : Wnt glycoproteins regulate the expression of FoxN1, the gene defective in nude mice. *Nat Immunol* 3 : 1102-1108, 2002
120. Griffith AV, Venables T, Shi J, Farr A, van Remmen H, Szveda L, Fallahi M, Rabinovitch P, Petrie HT : Metabolic Damage and Premature Thymus Aging Caused by Stromal Catalase Deficiency. *Cell Rep* 12 : 1071-1079, 2015
121. Semwal MK, Hester AK, Xiao Y, Udeaja C, Cepeda S, Vershelde JS, 2nd, Jones N, Wedemeyer SA, Emtage S, Wimberly K, Griffith AV : Redox status regulates autophagy in thymic stromal cells and promotes T cell tolerance. *Proc Natl Acad Sci U S A* 119 : e2204296119, 2022
122. Tabibzadeh S : Role of autophagy in aging : The good, the bad, and the ugly. *Aging Cell* 22 : e13753, 2023
123. Ravikumar B, Vacher C, Berger Z, Davies JE, Luo S, Oroz LG, Scaravilli F, Easton DF, Duden R, O'Kane CJ, Rubinsztein DC : Inhibition of mTOR induces autophagy and reduces toxicity of polyglutamine expansions in fly and mouse models of Huntington disease. *Nat Genet* 36 : 585-595, 2004
124. George AJT, Ritter MA : Thymic involution with aging : obsolescence or good housekeeping? *Immunol Today* 17 : 267-272, 1996
125. Boehm T, Swann JB : Thymus involution and regeneration : two sides of the same coin? *Nat Rev Immunol* 13 : 831-838, 2013