

# Basal ganglia as a sensory gating device for motor control

Ryuji Kaji

*Division of Advanced Clinical Neuroscience, University Hospital, The University of Tokushima School of Medicine, Tokushima, Japan*

**Abstract:** Basal ganglia lie between the cerebral cortex and the thalamus, and have dense fiber connections between them. These connections form 4-5 distinct loops or circuits to allow parallel processing of information. Among them, the most intensively studied is the motor loop, which comprises 2 distinct *direct* and *indirect* pathways. The direct pathway disinhibits the powerful inhibition of the internal segment of the globus pallidus/substantia nigra pars reticulata upon thalamic ventrolateral nuclei with a net result of facilitatory influence upon the motor cortex. By contrast, the indirect pathway exerts an inhibitory effect. Overall this dual system provides a center (excitatory)-surround (inhibitory) mechanism to focus its effect on selected cortical neurons. Although putative transmitters, inhibitory or excitatory nature of these projections and their receptors are mostly known, the functional role of the loop in motor control is not precisely understood. Several lines of evidence have recently been presented to support the view that this center-surround mechanism is used to focus the output to a specific group of muscles required for performing a specific task. This operation is made possible through opening the sensory channel for the expected sensory feed-back afferents during movement. Thus one of the important functions of basal ganglia seems to be the gating of sensory input for motor control. *J. Med. Invest.* **48**: 142-146, 2001

**Keywords :** Basal ganglia, Parkinson's disease, dystonia, sensory-motor integration, muscle afferent block

## Overview of basal ganglia anatomy and physiology

Basal ganglia is a term to denote subcortical nuclei, consisting of the striatum (putamen or PUT and caudate nucleus or CN), the pallidum (internal and external globus pallidus or Gpi and GPe), subthalamic nucleus (STN), and substantia nigra (pars compact or SNc and pars reticulata or SNr).

These structures are situated intermediate between the cerebral cortex (mainly frontal lobe) and the thalamus, and have dense fiber connections between them. Notably these connections form 4-5 distinct loops or circuits to allow *parallel processing* of infor-

mation through them (1). Here we focus subsequent discussion on the *motor loop*.

The basic anatomical connection of the motor loop is depicted in Fig. 1A. There are 2 distinct pathways in the loop ; *direct* and *indirect*. The direct pathway is driven by dopaminergic D1 receptor and disinhibits the powerful inhibition of Gpi/SNr upon VL thalamus with the net result of facilitatory influence upon the motor cortex. The indirect pathway on the other hand exerts the net inhibitory influence. Overall this dual system form a *center-surround* mechanism to focus its effect to selected cortical neurons (Fig. 2). Although putative transmitters, inhibitory or excitatory nature of these projections and their receptors are mostly known, the functional role of the loop in motor control is not precisely understood.

Physiological studies in the monkey and intra-operative recordings in man document a large amount of unit activities responding to sensory inputs, when they are relevant for motor control (2, 3). Numerous neur-

---

Received for publication July 2, 2001 ; accepted August 2, 2001.

Address correspondence and reprint requests to Ryuji Kaji, M.D., Ph.D., Department of Advanced Clinical Neuroscience University Hospital, The University of Tokushima School of Medicine, Kuramoto-cho, Tokushima 770-8503, Japan and Fax : +81-88-633-7208.

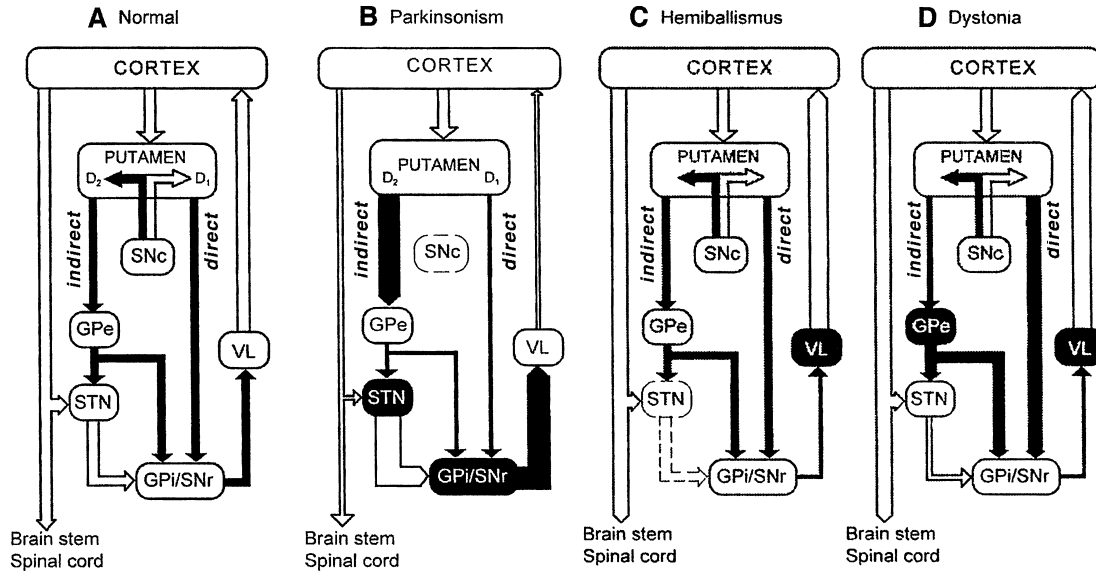


Fig. 1 Overview of the motor loop according to Alexander and Crutcher model (1).

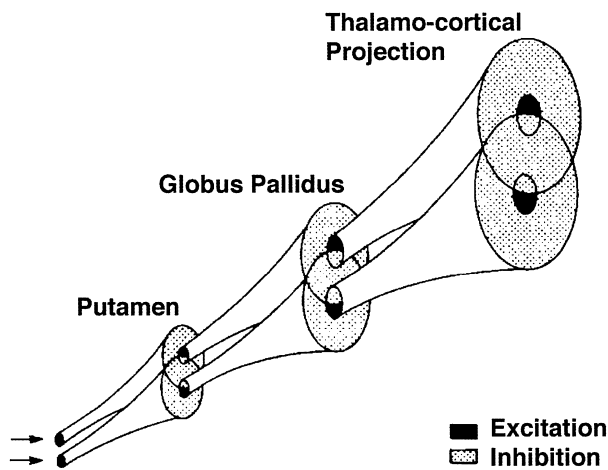


Fig. 2 Center (excitatory)-surround (inhibitory) mechanism in the motor loop

ons in the supplementary motor or premotor cortex discharge in response to a sensory cue long before the movement onset, and they appear to encode a specific movement parameter. Such *set-related* activities or *context-dependent* discharges are also seen in the basal ganglia (4). Despite these, the exact pathway through which the sensory input reaches the basal ganglia remains elusive (5).

### Pathophysiology of Parkinson's disease, hemiballismus and dystonia

Parkinson's disease is a degenerative disorder that primarily affects nigrostriatal dopaminergic neurons. Biological mechanism of the selective vulnerabil-

ity of this system is still unknown, but a number of hypotheses were advanced, including environmental or genetic susceptibility of these neurons to impaired oxidative phosphorylation. Clinically the disease is characterized by *akinesia* (lack or poverty of movement), *bradykinesia* (slowness of movement), *rigidity* of muscles, disturbed postural reflex and tremor. Hallett and Khoshbin (6) studied the physiological mechanism of bradykinesia using surface EMGs in a ballistic elbow flexion movement. They found a fractionated pattern of agonist-antagonist muscle bursts (Fig. 3), which were actually repetitions of the normal triphasic (agonist-antagonist-agonist) muscle activation. The basic abnormality therefore seemed smaller-than-normal scaling of movement excursion at each burst, which was compensated by repeating the normal triphasic pattern. Intriguing is the benefit of the external sensory cues for initiating and performing movements (*kinesie paradoxale*). Auditory or visual input dramatically corrects the small excursion of movement. This suggests that abnormal scaling of movement is secondary to disturbed utilization of proprioceptive sensory input, but not to exteroceptive input disturbance. In support of this idea, Walshe (7) demonstrated that blockade of muscle afferents with local anesthetic normalized the small excursion of elbow movement in a boy with post-encephalitic Parkinsonism (Fig. 3).

Fig. 1B illustrates the mechanism of clinical symptoms in Parkinson's disease. Because the striatonigral dopaminergic projection acts as inhibitory input to the indirect pathway (D2 receptor) and as excitatory input to the direct pathway (D1 receptor), its absence

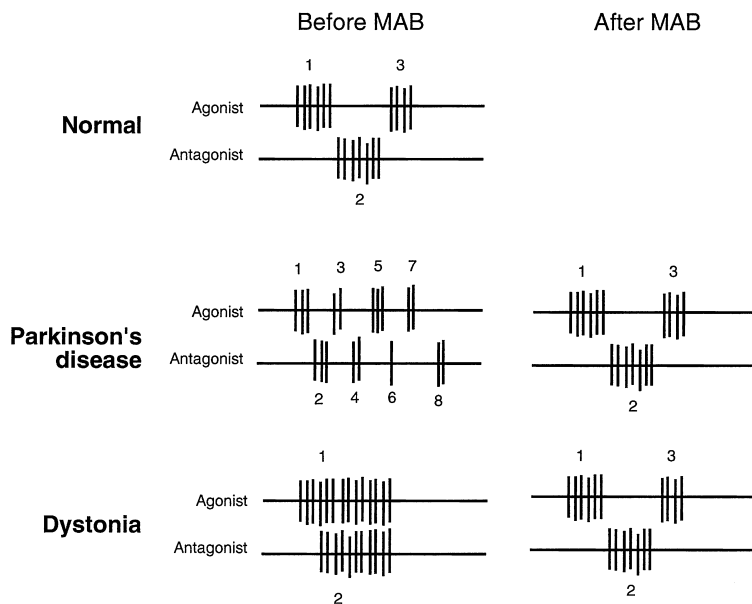


Fig. 3. Representative surface EMG recordings in ballistic elbow flexion movement from agonist (biceps brachii) muscle and antagonist (triceps brachii) muscle before (left) and after (right) muscle afferent block (MAB).

leads to the overactive indirect pathway and hypoactive direct pathway. The overall effect is excessive inhibitory influence upon the motor cortex, which underlies bradykinesia or akinesia.

*Hemiballism* is a hyperkinetic state caused by a focal lesion in the subthalamic nucleus (STN), giving rise to a thrust-like or violent involuntary movement of the limbs contralateral to the lesion. This is explained as shown in Fig. 1C. Because of the lack of facilitatory input from STN, tonic discharges of GPi/SNr are lost. Since the latter normally inhibits VL thalamus, the net effect is disinhibiting the thalamocortical projection, leading to the hyperkinetic state.

*Dystonia* is defined as a syndrome of sustained muscle contractions frequently causing twisting or repetitive movements or abnormal postures. Examples of focal type include blepharospasm, spasmodic torticollis (or cervical dystonia) and writer's cramp (or hand dystonia). One of the clinical features is *sensory trick*, in which a tactile or proprioceptive sensory input to the body part nearby dramatically improves abnormal posture or contraction. In case of blepharospasm, reducing the amount of light or brightness is equally effective. This phenomenon clearly points to sensory-motor mismatch in dystonia (8).

Another important feature in dystonia is that it often affects only a specific task (*task-specificity*). Writer's cramp usually begins as a task-specific disorder only affecting writing, but may later involve other tasks as well. Other task-specific dystonias include pianist's cramp or other musician's cramp, typist's cramp and telegrapher's cramp, all of which

affect activities of frequently or repetitiously used motor acts.

Dystonia is regarded as one of the basal ganglia disorders, because focal lesions in the motor loop cause dystonia in the limbs contralateral to the lesion (*hemidystonia*), and because trihexyphenidyl, an anti-cholinergic agent frequently used for Parkinson's disease, is also effective in treating this condition. Of note is that some dystonias such as writer's cramp affect only specific task (*task-specificity*). Their symptoms are mostly *stereotypical*: the neck rotation in spasmodic torticollis is always toward the same direction, and the abnormal contraction in writer's cramp remains the same. Electromyographic analyses showed simultaneous contraction of agonist and antagonist muscles (*co-contraction*) or contraction of surrounding muscles (*overflow*) (Fig. 3).

These findings suggest that dystonia is a disorder of a frequently used motor program or *subroutine*, in which motor output is matched to a fixed sensory input (8). This idea is also supported by the finding of the abolishment of dystonic muscle contractions by blocking muscle afferents (Fig. 3) (9). Probably this motor subroutine is stored as connectivities in the motor loop. If the surround inhibitory mechanism in the motor loop is disrupted (as depicted in Fig. 1D), the lack of inhibition of antagonist or surround muscles causes co-contraction or overflow phenomena.

## Sensory function of the basal ganglia viewed from the clinical domain

As reviewed above, the diagram shown in Fig. 1 gives an account for the mechanism of action of therapeutic agents or surgical options. It however remains unsolved how these multiple inhibitory connections affect movement or what kind of information processing takes place.

Although the basal ganglia are commonly regarded as a center for motor control, the benefit of external sensory cues in Parkinson's disease and the sensory trick in dystonia highlight sensory aspects implicated in these basal ganglia disorders. Animal studies indicate that sensory inputs reaching the basal ganglia significantly differ from those in the lemniscal exteroceptive system in that they showed encoding of information that appeared to be relevant for motor control (5). Indeed the basal ganglia appear to 'gate' sensory inputs at various levels (10, 11).

Stimulation of the basal ganglia inhibits auditory and visual cortical evoked responses. Lemniscal and extralemniscal components of the somatosensory system are modified by the basal ganglia. For example, the sensory responsiveness of second order neurons in the trigeminal sensory nucleus is altered by activation of CN or GP (10). Lesions of the basal ganglia mostly affect automatic movements that need sensory guidance. It therefore is likely that the basal ganglia control automatic or highly trained movements in relation to relevant sensory inputs (12, 13).

Tasks impaired in writer's cramp or other occupational cramps are among these. In accord with this, hand representation in the somatosensory cortex was found disorganized in writer's cramp (14). Head control and blinking are other examples of such automatic movements impaired in spasmodic torticollis or blepharospasm. These motor programs or *subroutines* are encoded in the association of a fixed sensory input and a motor output (8). There are now converging pieces of evidence indicating that this sensory gating for motor control is lost in dystonia (15) and is scaled less than normal in Parkinson's disease.

## REFERENCES

- Alexander GE, Crutcher MD : Functional architecture of basal ganglia circuits : neural substrates of parallel processing. Trends Neurosci 13 (7) : 266-271, 1990
- Lenz FA, Suarez JI, Metman LV, Reich SG, Karp BI, Hallett M, Rowland LH, Dougherty P.M. : Pallidal activity during dystonia : somatosensory reorganisation and changes with severity. J Neurol Neurosurg Psychiatry 65 (5) : 767-770, 1998
- Romo R, Ruiz S, Crespo P, Zainos A, Merchant H : Representation of tactile signals in primate supplementary motor area. J Neurophysiol 70 (6) : 2690-2694, 1993
- Wise SP, Mauritz KH : Set-related neuronal activity in the premotor cortex of rhesus monkeys : effects of changes in motor set. Proc R Soc Lond B Biol Sci 223 (1232) : 331-354, 1985
- Lidsky TI, Manetto C, Schneider JS : A consideration of sensory factors involved in motor functions of the basal ganglia. Brain Res. 356 (2) : 133-14, 1985.
- Hallett M, Khoshbin S : A physiological mechanism of bradykinesia. Brain 103 (2) : 301-314, 1980
- Walshe F : Observation on the nature of the muscular rigidity of paralysis agitans, and its relationship to tremor. Brain 47 : 159-177, 1924
- Kaji R, Shibasaki H, Kimura J : Writer's cramp : a disorder of motor subroutine? [editorial ; comment]. Ann Neurol 38 (6) : 837-838, 1995
- Kaji R, Rothwell JC, Katayama M, Ikeda T, Kubori T, Kohara N, Mezaki T, Shibasaki H, Kuimura J : Tonic vibration reflex and muscle afferent block in writer's cramp. Ann Neurol : 38 (2) : 155-162, 1995
- Schneider JS, Diamond SG, Markham CH : Deficits in orofacial sensorimotor function in Parkinson's disease. Ann Neurol 19 (3) : 275-282, 1986
- Tinazzi M, Priori A, Bertolasi L, Frasson E, Mauguiere F, Fiaschi A : Abnormal central integration of a dual somatosensory input in dystonia. Evidence for sensory overflow. Brain 123 (Pt 1) : 42-50, 2000
- Boecker H, Ceballos-Baumann A, Bartenstein P, Weindl A, Siebner HR, Fassbender T, Munz F, Schwaiger M, Conrad B : Sensory processing in Parkinson's and Huntington's disease : investigations with 3D H (2) (15) O-PET. Brain 122 (Pt 9) : 1651-1665, 1999
- Passingham RE, Toni I, Schluter N, Rushworth MF : How do visual instructions influence the motor system? Novartis Found Symp 218 : 129-141, 1998
- Bara-Jimenez W, Catalan MJ, Hallett M, Gerloff C : Abnormal somatosensory homunculus in

- dystonia of the hand. *Ann Neurol* 44 (5) : 828-831, 1998
15. Murase N, Kaji R, Shimazu H, Katayama-Hirota M, Ikeda A, Kohara N, Kimura J, Shibasaki H, Rothwell JC : Abnormal premovement gating of somatosensory input in writer's cramp. *Brain* 123 (Pt 9) : 1813-1829., 2000